

CERTIFICATE OF LOCATION OF GOVERNMENT CORNER

NORTHEAST Corner of Section 9, Township 106, Range 39, 5TH P.M.

STATE OF MINNESOTA, County of MURRAY

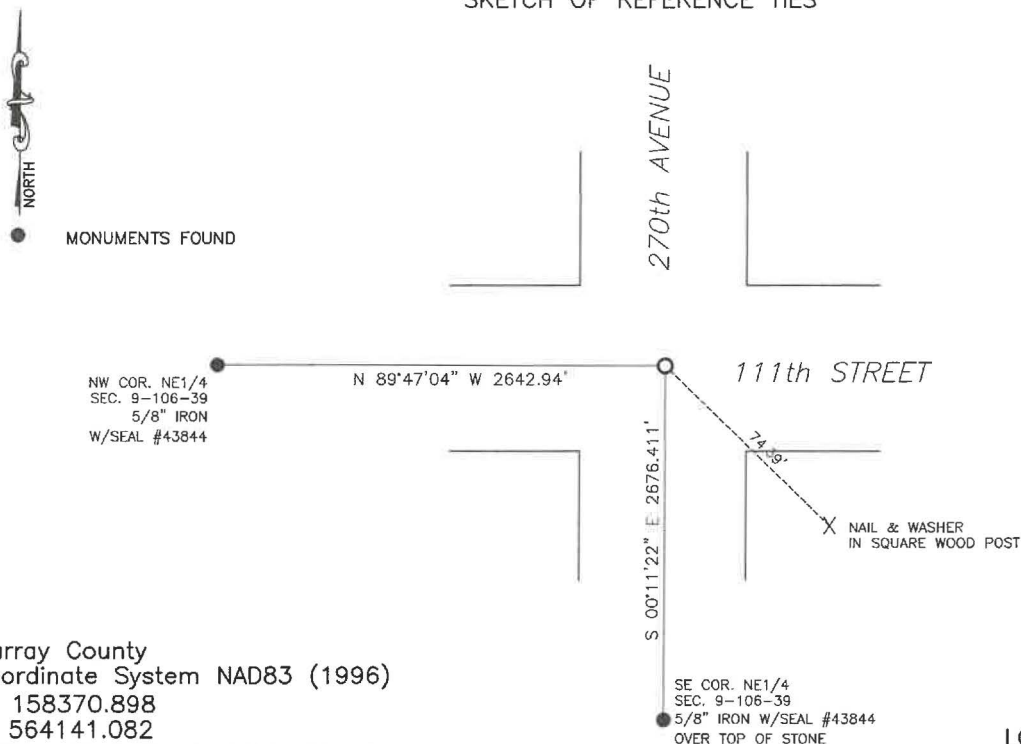
At the corner location shown on the sketch:

☒ On 7/22/2024
DATE found a 12"x8" stone with a 2" square wood stake by the stone.

☒ left monument as found, ☐ lowered monument, ☐ removed monument (explain)

☒ On 1/16/2025
DATE placed a 5/8" iron with seal #43844 over top of the stone

SKETCH OF REFERENCE TIES



Murray County
Coordinate System NAD83 (1996)
N: 158370.898
E: 564141.082

WGS84
LAT: 44°00'28.4656"
LON: -95°31'22.4471"

Statement of evidence relative to this corner location is on back of page.

I hereby certify that this document and the data contained herein was prepared by me or under my direct supervision.

Daniel L. Bueltel
License No. 43844

3/12/2025
DATE

MAR 13 2025

MURRAY COUNTY RECORDER

Statement of Evidence

NORTHEAST CORNER SECTION 9, T106N, R39W of the 5th P.M.

In September 1858, W.J. Neely surveyed the east township line.

In July of 1861, J.W. Myers surveyed the north, south, and west township lines.

In August of 1861, Wellman & Smoot subdivided the township.

On June 28, 2024, Bueltel-Moseng Land Surveying searched the area and found a $\frac{5}{8}$ " iron at the corner.

On July 22, 2024 Buelteing-Moseng Land Surveying dug with a backhoe and found a 12"x8" stone with a 2" wooden hub on the side of the stone. Accepted the stone as the corner and set a $\frac{3}{4}$ " iron on the south side of the stone.

Returned on January 16, 2025 and set a $\frac{5}{8}$ " iron with seal #43844 over top of the stone.